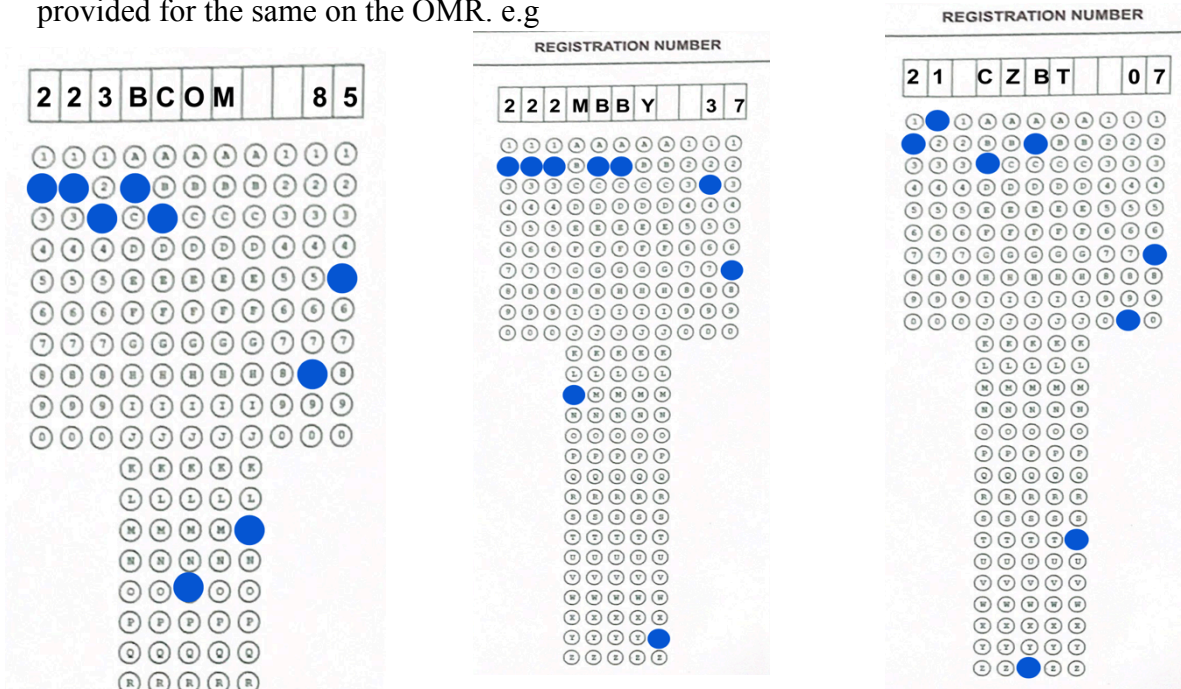


INSTRUCTIONS FOR FILLING OMR SHEETS

1. Use only blue or black ball point pens to fill all the information on the OMR sheet and for giving responses.
2. Use of pencil on the OMR sheet is prohibited and if a candidate is found doing the same, such responses will be treated as invalid.
3. Students need to write their register number and question paper code in the space provided for the same on the OMR. e.g



4. OMR sheet has space for answering 60 questions. Four circles are given for each response, marked as (a), (b), (c), (d). Candidates need to darken the circle of their choice as per the question number using a pen.

WRONG METHODS



CORRECT METHOD



5. Multiple markings will be treated as invalid response
6. Use of eraser or whitener is completely prohibited.
7. In case a candidate is not attempting any question, they need not darken the circle and leave it blank.
8. Candidates should not make any stray marks on the OMR sheets.
9. Do not fold the OMR Sheet.
10. Hand over both OMR sheet and Question paper to the room invigilators.